



AV Stumpfl GmbH

A-4702 Wallern, Mitterweg 46, Austria

Tel +43 (7249) 42811-0 | Fax +43 (7249) 42811-4

AVstumpfl@AVstumpfl.com | www.AVstumpfl.com

Quick Installation Guide

PIXERA SMPTE Interface

Table of Contents

1.	Introduction	2
2.	Prerequisites	2
3.	Installation Steps	3
3.1	Windows 7	3
3.2	Windows 8.1 or higher	6
4.	Document History	6



Bankverbindung/ Bank details: Sparkasse OÖ,
IBAN: AT71 2032 0121 0000 6664
SWIFTcode: ASPKAT2L

Firmenbuch Nr: FN237609a
EORI-Nummer: ATEOS1000001436
UID: ATU 57214222

DVR: 0741311
ARA-Lizenz Nr.: 16818
ERA-Lizenz Nr.: 50929





AV Stumpfl GmbH

A-4702 Wallern, Mitterweg 46, Austria
Tel +43 (7249) 42811-0 | Fax +43 (7249) 42811-4
AVstumpfl@AVstumpfl.com | www.AVstumpfl.com

1 Introduction

This quick introduction should guide you through the installation process of the PIXERA SMPTE interface (Article number: PXZ-IF/SMPTE).

Please follow this guide with accuracy!

If you need further help or assistance please contact us at:

AV Stumpfl GmbH

Phone: +43(7249) 42811

E-Mail: support@avstumpfl.com

Forum: technicalforum.avstumpfl.com

2 Prerequisites

The following prerequisites must be present to install the driver:

- PIXERA SMPTE interface
- *PixeraSmppte.inf* from the zip file

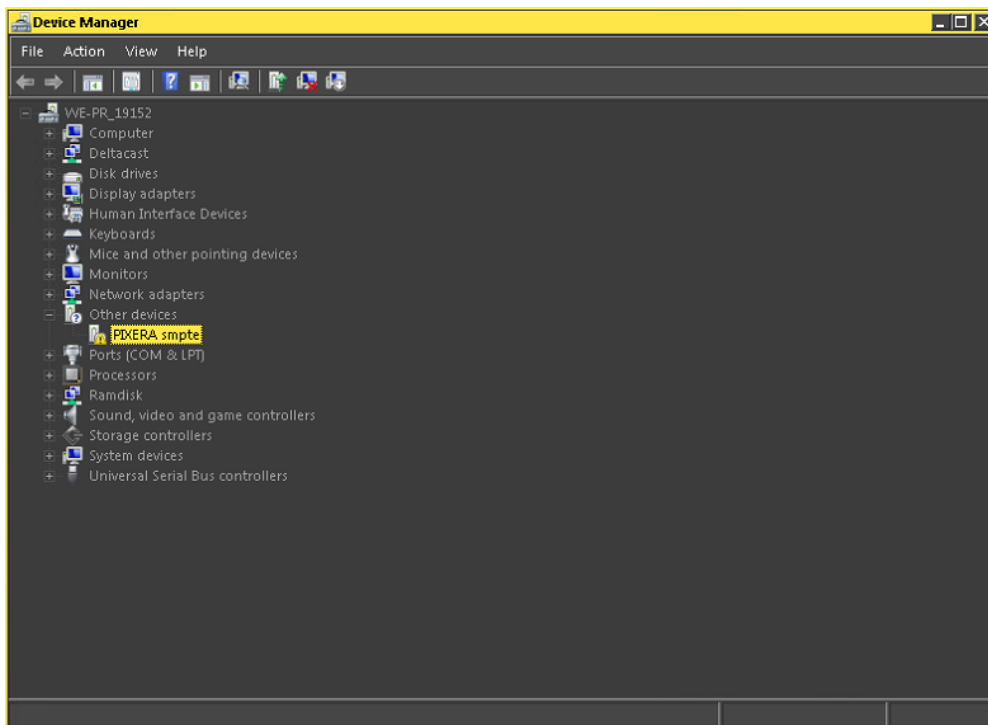




3 Installation Steps

3.1 Windows 7

1. Connect the PIXERA SMPTE interface to an usb port of your choice.
2. Open the Windows Explorer.
3. Click on “Open Control Panel”.
4. Click on “Device Manager” and then you should see a device called “PIXERA smpte” in the “Other devices” menu.



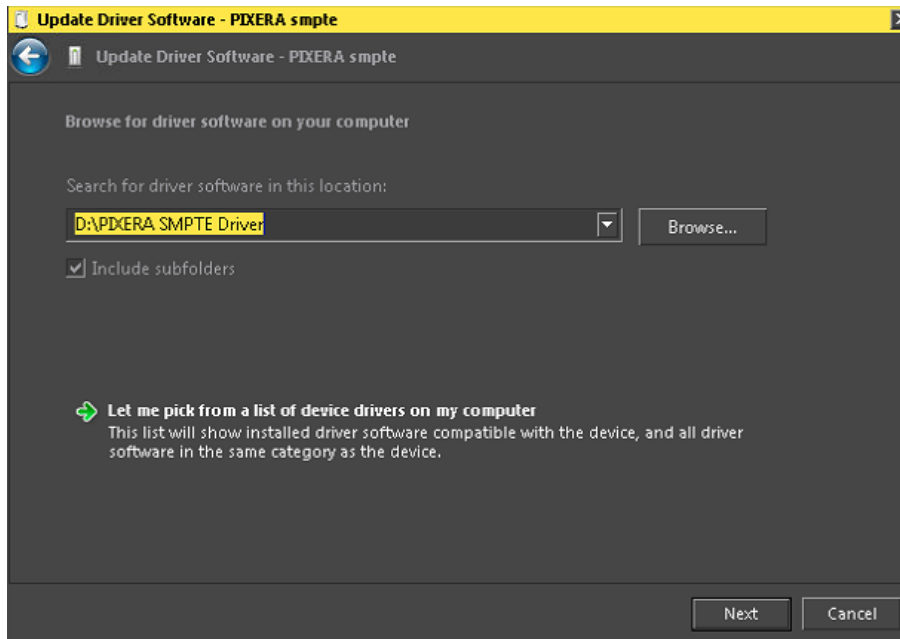
5. Right click on the “PIXERA smpte” interface.
6. Choose “Update Driver Software...”.



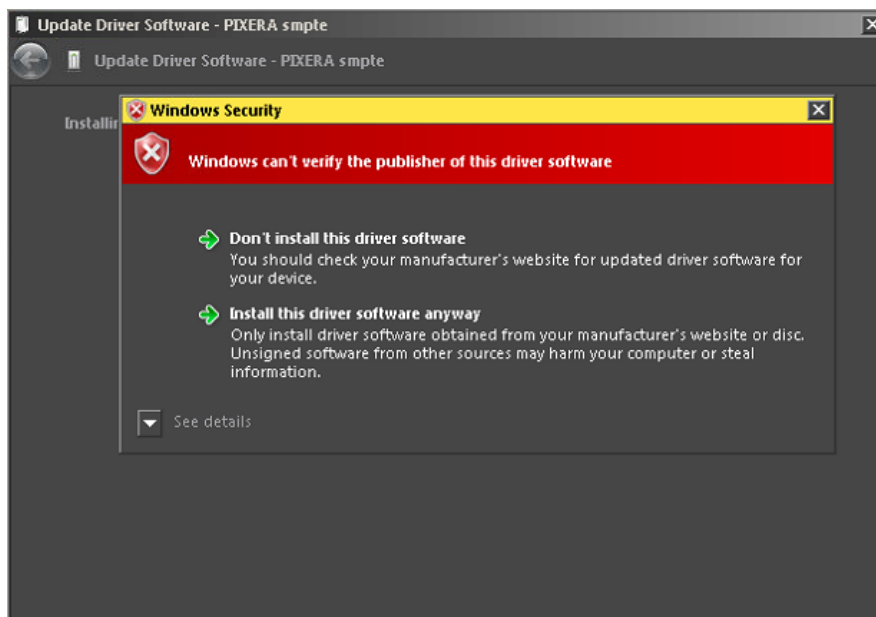
AV Stumpfl GmbH

A-4702 Wallern, Mitterweg 46, Austria
Tel +43 (7249) 42811-0 | Fax +43 (7249) 42811-4
AVstumpfl@AVstumpfl.com | www.AVstumpfl.com

- Click on “Browse my computer for driver software” and navigate to your downloaded and extracted “PIXERA SMPTE Driver” folder where the “PixeraSmpte.inf” file is located.



- Click on “Next”.
- After some seconds a new window appears automatically!
Please click the second option “Install this driver software anyway”.



Bankverbindung/ Bank details: Sparkasse OÖ,
IBAN: AT71 2032 0121 0000 6664
SWIFTcode: ASPKAT2L

Firmenbuch Nr: FN237609a
EORI-Nummer: ATEOS1000001436
UID: ATU 57214222

DVR: 0741311
ARA-Lizenz Nr.: 16818
ERA-Lizenz Nr.: 50929

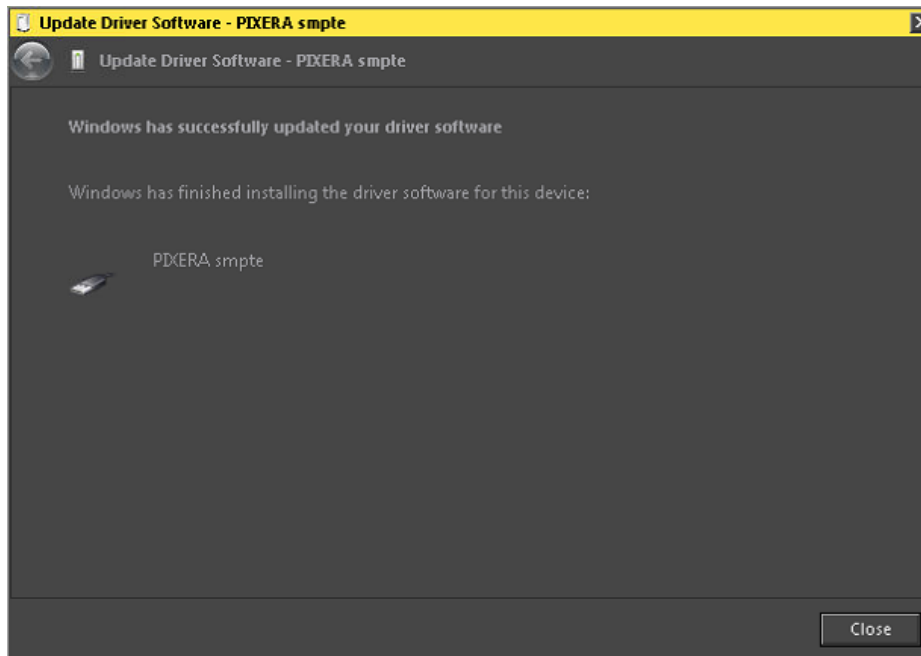




AV Stumpfl GmbH

A-4702 Wallern, Mitterweg 46, Austria
Tel +43 (7249) 42811-0 | Fax +43 (7249) 42811-4
AVstumpfl@AVstumpfl.com | www.AVstumpfl.com

10. If the driver installation was successful, you should get the following message on your screen.



If you click “Close” on the last window you can doublecheck if the driver installation was successful by navigating into the “Universal Serial Bus devices” menu. The PIXERA smpte interface should be visible in this menu without a yellow warning!



Bankverbindung/ Bank details: Sparkasse OÖ,
IBAN: AT71 2032 0121 0000 6664
SWIFTcode: ASPKAT2L

Firmenbuch Nr: FN237609a
EORI-Nummer: ATEOS1000001436
UID: ATU 57214222

DVR: 0741311
ARA-Lizenz Nr.: 16818
ERA-Lizenz Nr.: 50929





AV Stumpfl GmbH

A-4702 Wallern, Mitterweg 46, Austria

Tel +43 (7249) 42811-0 | Fax +43 (7249) 42811-4

AVstumpfl@AVstumpfl.com | www.AVstumpfl.com

3.2 Windows 8.1 or higher

On operating systems with Windows 8.1 or higher, the PIXERA SMPTE driver will be installed automatically!

In this case you don't need to install the driver manually.

4 Document History

The following table provides an overview of the most important document changes.

Version	Date	Description
1.0	27.05.2019	Initial release



Bankverbindung/ Bank details: Sparkasse OÖ,
IBAN: AT71 2032 0121 0000 6664
SWIFTcode: ASPKAT2L

Firmenbuch Nr: FN237609a
EORI-Nummer: ATEOS1000001436
UID: ATU 57214222

DVR: 0741311
ARA-Lizenz Nr.: 16818
ERA-Lizenz Nr.: 50929

